

JL1

STEEL 钢制传感器

平行(剪切)梁结构, 钢制传感器;用于电子平台秤、料斗秤、配料秤及工业称重系统等。

Single ended shear beam load cell , steel construction , widely used for floor scales , ground scales , hopper scales, batching scales and industrial weighing systems

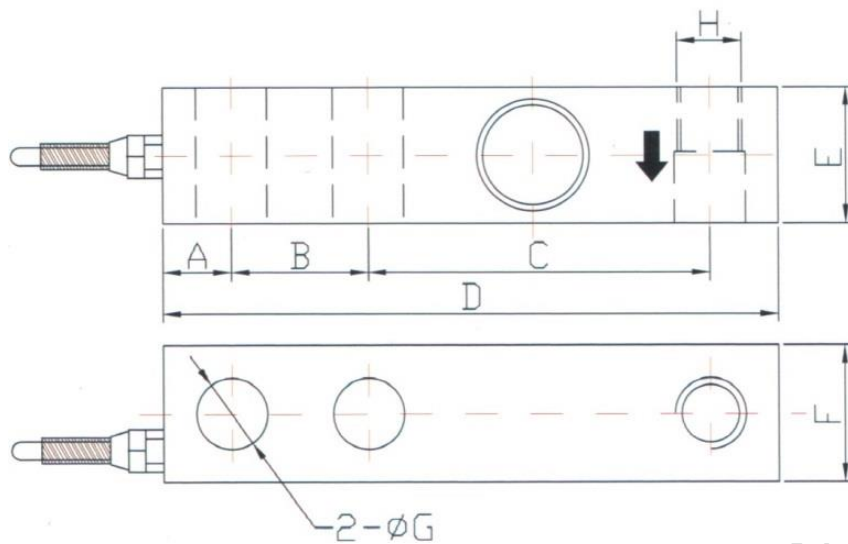


量程 CAPACITY (kg)

100,200,250,500,1000,1500,2000,2500,5000,10000

外形尺寸 DIMENSIONS

外形尺寸 DIMENSIONS								
量程 Capacity(kg)	A	B	C	D	E	F	G	H
100~250	15.8	25.4	76.2	130	25.4	31.8	13.5	M12*1.75
500~2000	15.8	25.4	76.2	130	31.8	31.8	13.5	M12*1.75
2500~5000	19.1	38.1	95.3	171.5	38.1	38.1	19.8	M18*1.5
100~250	25.4	50.8	123.9	225.6	50.8	50.8	26.2	M30*2



技术参数 SPECIFICATIONS

输出灵敏度	Rated Output	2.0(3.0)±0.1%mv/v
零点输出	Zero Balance	±2%F. S.
非线性	Non-linearity	0.02%F. S.
滞后	Hysteresis	0.02%F. S.
重复性	Non-Repeatability	0.02%F. S.
蠕变(30分钟)	Creep(30min)	0.03%F. S.
温度灵敏度漂移	Temp. Effect On Output	0.025%F. S. /10°C
零点温度漂移	Temp. Effect On Zero	0.025%F. S. /10°C
输入电阻	Input Impedance	385 ±15Ω
输出电阻	Output mpedance	350 ±4Ω
绝缘电阻	Insulation	>2000MΩ/50VDC
使用电压	Recommended Excitation	10V
最大使用电压	Maximum xcitation	15V
温度补偿范围	Compensated TEmp. Range	-10~40°C
工作温度范围	Opera ting Temp. Range	-20~60
安全过载	Safe Overload	150%F. S.
极限超载	Ultimate Overload	300%F. S.
电缆线尺寸	Cable Size	Φ5x6000mm
防护等级	Protection Class	IP66
接线方式 Wiring <div style="display: flex; justify-content: center; gap: 20px; margin-top: 10px;"> <div style="display: flex; align-items: center;"> ● +输入 Excitation </div> <div style="display: flex; align-items: center;"> ● -输入 Excitation </div> <div style="display: flex; align-items: center; margin-top: 5px;"> ● +输出 Signal </div> <div style="display: flex; align-items: center;"> ● -输出 Signal </div> </div>		