

# D1

## STEEL 钢制传感器

剪切梁式结构，应用于电子衡器、工业测力称重系统。

Double ended shear beam load cell , used for electronic scales , industrial force measuring and weighing systems .

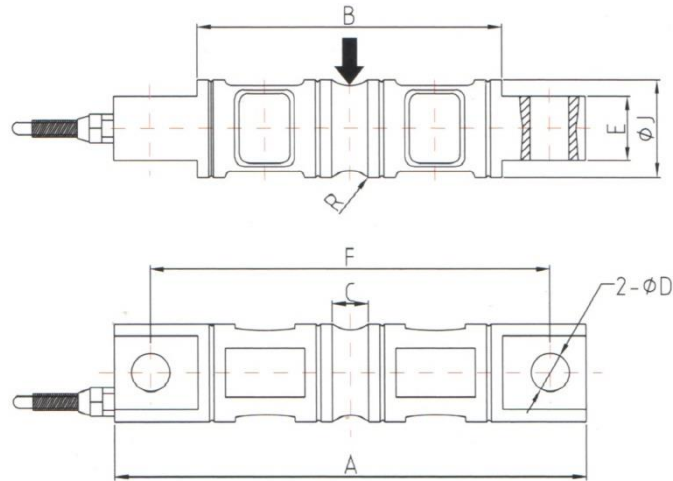


量程 CAPACITY ( kg )

5,10,20,30,50,100,150

外形尺寸 DIMENSIONS

外形尺寸 DIMENSIONS								
量程 Capacity(kg)	A	B	C	D	E	F	J	R
5K~10K	206.3	133.1	15.8	174.8	28.5	43.2	16.8	12.7
20K	206.3	133.1	21.3	174.3	28.5	49.5	16.8	12.7
30~50K	206.4	164.8	25.4	215.9	60.2	76.9	26.9	25.4
100K	285.8	190.2	31	241.3	63.5	88.9	26.9	38.1
150K	285.8	190.2	31	241.3	71.1	99.1	26.9	38.1



## 技术参数 SPECIFICATIONS

输出灵敏度	Rated Output	$3.0 \pm 1\% \text{mv/v}$
零点输出	Zero Balance	$\pm 1\% \text{F. S.}$
非线性	Non-linearity	$0.05\% \text{F. S.}$
滞后	Hysteresis	$0.05\% \text{F. S.}$
重复性	Non-Repeatability	$0.05\% \text{F. S.}$
蠕变(30分钟)	Creep(30min)	$0.1\% \text{F. S.}$
温度灵敏度漂移	Temp.Effect On Output	$0.03\% \text{F. S.} / 10^\circ\text{C}$
零点温度漂移	Temp.Effect On Zero	$0.03\% \text{F. S.} / 10^\circ\text{C}$
输入电阻	Input Impedance	$750 \pm 15\Omega$
输出电阻	Output impedance	$750 \pm 3\Omega$
绝缘电阻	Insulation	$>2000\text{M}\Omega / 50\text{VDC}$
使用电压	Recommended Excitation	10V
最大使用电压	Maximum excitation	15V
温度补偿范围	Compensated Temp. Range	$-10 \sim 40^\circ\text{C}$
工作温度范围	Operating Temp. Range	$-20 \sim 60^\circ\text{C}$
安全过载	Safe Overload	$150\% \text{F. S.}$
极限超载	Ultimate Overload	$300\% \text{F. S.}$
电缆线尺寸	Cable Size	$\Phi 5 \times 5000\text{mm}$
防护等级	Protection Class	IP66

接线方式  
Wiring

- +输入 Excitation    ● -输入 Excitation  
● +输出 Signal        ● -输出 Signal