

JLB

STEEL 钢制传感器

平行(剪切)梁结构，波纹管密封设计、合金钢、不锈钢制传感器：用于料斗秤、配料秤等，工业称重系统。

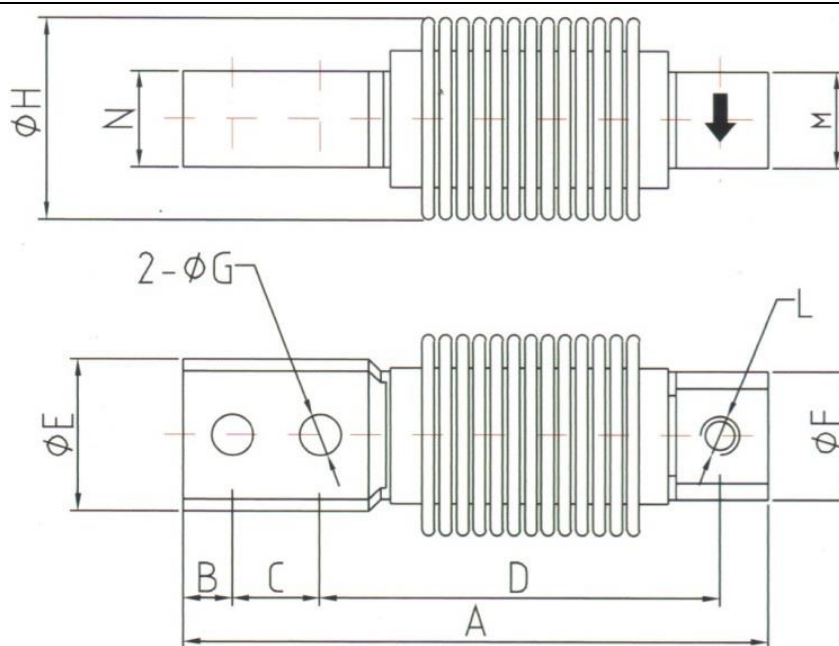
Single ended bending load cell , complete enclosed welding , alloy steel/stainless steel construction , used for hopper scales , batching scales and industrial weighing systems .



量程 CAPACITY (kg)

20 , 30 , 50 , 100 , 200 , 300 , 500 , 1000 , 1500

外形尺寸 DIMENSIONS



技术参数 SPECIFICATIONS

输出灵敏度	Rated Output	2.0(3.0) \pm 10%mv/v
零点输出	Zero Balance	\pm 2%F. S.
非线性	Non-linearity	0.02(0.03)%F. S.
滞后	Hysteresis	0.02(0.03)%F. S.
重复性	Non-Repeatability	0.03%F. S.
蠕变(30分钟)	Creep(30min)	0.03%F. S.
温度灵敏度漂移	Temp.Effect On Output	0.02(0.03)%F. S./10 $^{\circ}$ C
零点温度漂移	Temp.Effect On Zero	0.02(0.03)%F. S./10 $^{\circ}$ C
输入电阻	Input Impedance	385 \pm 15 Ω
输出电阻	Output impedance	350 \pm 3 Ω
绝缘电阻	Insulation	>2000M Ω /50VDC
使用电压	Recommended Excitation	10V
最大使用电压	Maximum xcitation	15V
温度补偿范围	Compensated TEmp. Range	-10 $^{\circ}$ ~40 $^{\circ}$ C
工作温度范围	Opera ting Temp. Range	-20 $^{\circ}$ ~60 $^{\circ}$ C
安全过载	Safe Overload	150%F. S.
极限超载	Ultimate Overload	300%F. S.
电缆线尺寸	Cable Size	Φ 5x2000mm
防护等级	Protection Class	IP67
接线方式 Wiring <div style="display: flex; justify-content: center; gap: 20px; margin-top: 10px;"> <div style="display: flex; align-items: center;"> ● +输入 Excitation </div> <div style="display: flex; align-items: center;"> ● -输入 Excitation </div> <div style="display: flex; align-items: center; margin-top: 5px;"> ● +输出 Signal </div> <div style="display: flex; align-items: center;"> ● -输出 Signal </div> </div>		