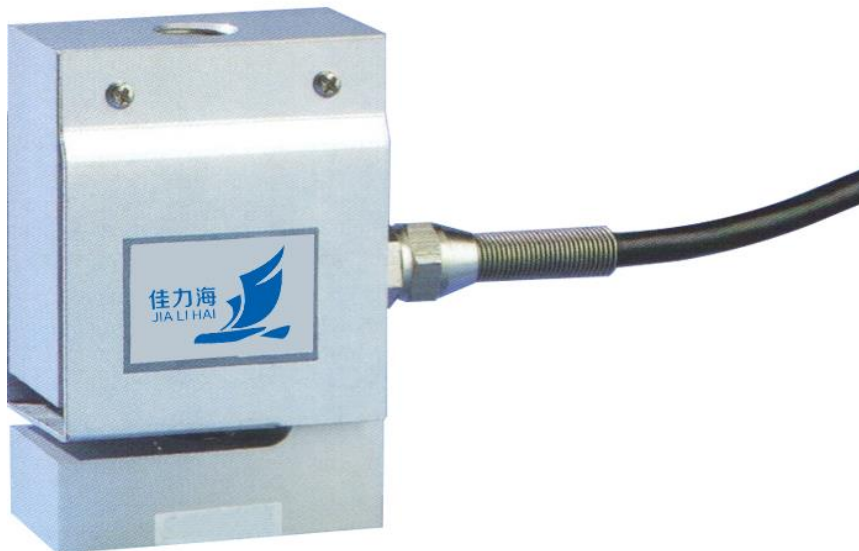


JLS3

ALUMINIUM 铝制传感器

“s” 平行(剪切)梁结构，铝制传感器；用于机械秤改装电子秤、料斗秤、测力机及工业称重系统

S-Type parallel / shear beam , aluminum load cell , used for electronic scales modified from mechanical scales , hopper scales , force calibration systems and industrial weighing and control systems

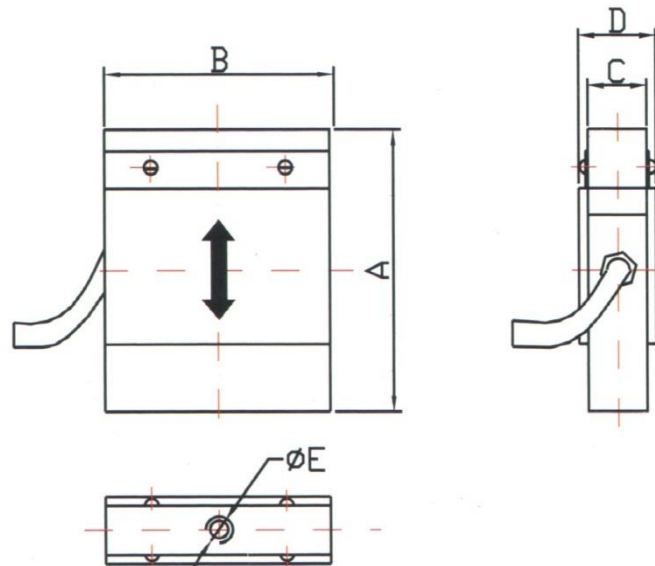


量程 CAPACITY (kg)

3,5,10,15,20, 25,30,35,40,50,60,100,200,250,300

外形尺寸 DIMENSIONS

外形尺寸 DIMENSIONS					
量程 Capacity(kg)	A	B	C	D	E
3~25	63.5	50.8	12.7	17	M6X1-6H
30~200	76.2	50.8	25.4	30	M12X1.75-6H



技术参数 SPECIFICATIONS

输出灵敏度	Rated Output	$2.0 \pm 10\% \text{mv/v}$
零点输出	Zero Balance	$\pm 2\% \text{F. S.}$
非线性	Non-linearity	$0.03\% \text{F. S.}$
滞后	Hysteresis	$0.03\% \text{F. S.}$
重复性	Non-Repeatability	$0.02\% \text{F. S.}$
蠕变(30分钟)	Creep(30min)	$0.03\% \text{F. S.}$
温度灵敏度漂移	Temp. Effect On Output	$0.03\% \text{F. S.} / 10^\circ \text{C}$
零点温度漂移	Temp. Effect On Zero	$0.03\% \text{F. S.} / 10^\circ \text{C}$
输入电阻	Input Impedance	$410 \pm 15 \Omega$
输出电阻	Output impedance	$350 \pm 3 \Omega$
绝缘电阻	Insulation	$> 2000 \text{M}\Omega / 50 \text{VDC}$
使用电压	Recommended Excitation	10V
最大使用电压	Maximum excitation	15V
温度补偿范围	Compensated Temp. Range	$-10 \sim 40^\circ \text{C}$
工作温度范围	Operating Temp. Range	$-20 \sim 60^\circ \text{C}$
安全过载	Safe Overload	$150\% \text{F. S.}$
极限超载	Ultimate Overload	$200\% \text{F. S.}$
电缆线尺寸	Cable Size	$\Phi 4 \times 2000 \text{mm}$
防护等级	Protection Class	IP65
接线方式 Wiring <div style="display: flex; justify-content: center; gap: 20px; margin-top: 10px;"> <div style="display: flex; align-items: center;"> ● +输入 Excitation </div> <div style="display: flex; align-items: center;"> ● -输入 Excitation </div> <div style="display: flex; align-items: center; margin-top: 5px;"> ● +输出 Signal </div> <div style="display: flex; align-items: center;"> ○ -输出 Signal </div> </div>		